

## Flexi System

### Bain Maire Unit 1500 mm - 4 GN (beechwood finish)

ITEM # \_\_\_\_\_

MODEL # \_\_\_\_\_

NAME # \_\_\_\_\_

SIS # \_\_\_\_\_

AIA # \_\_\_\_\_



321011 (FSL15C4)

Bain-marie unit with beech wood finish (4 GN container capacity)

### Short Form Specification

#### Item No.

304 AISI stainless steel worktop with rounded edges. Heated well with rounded corners, thermostatically controlled temperature can be set between +60/+90°C, in 304 AISI stainless steel with drain hole and pipe. High speed heaters to reduce pre-heating time. Electronic overheating safety device. Well is suited to accommodate GN 1/1 containers (max. H=200mm). Tempered glass overshelf with cold lights. Side panels in beech wood finishing. Ambient cupboard with doors in beech wood finishing on operator side. Tray slides in 304 AISI stainless steel, mounted on both sides of the unit, fold down in order to facilitate passage of the unit through doorways. The unit is mounted on 4 wheels (150mm high).

### Main Features

- Optional tilting plinth can be installed to cover the feet or the wheels.
- Wells in 304 AISI stainless steel with drain holes and pipes and with rounded corners to facilitate cleaning operations.
- Thermostatically controlled temperature can be set from +60 to +90°C, at ambient temperature, following HACCP rules.
- Tempered glass overshelf with cold lights included for an elegant and safe presentation of the food.
- The well dimensions allow the storage of 1/1 GN containers (2 in the model 750 mm in length, 3 in the model 1125 mm in length and 4 in the model 1500 mm in length) or various combinations of containers, all with a maximum height of 200 mm (available as accessories).
- Electronic overheating protection.
- Panels and hinged doors on the operator side, for quick, easy and hygienic storage, and have a beech wood finish.
- The two tray slides are constructed in plain 304 AISI stainless steel and can be folded down to facilitate passage of the units through doorways.

### Construction

- 304 AISI stainless steel top with rounded edges.
- Unit mounted on four wheels, 150 mm in height (two with brakes), but can be mounted on 150 mm high feet (as special).

### Optional Accessories

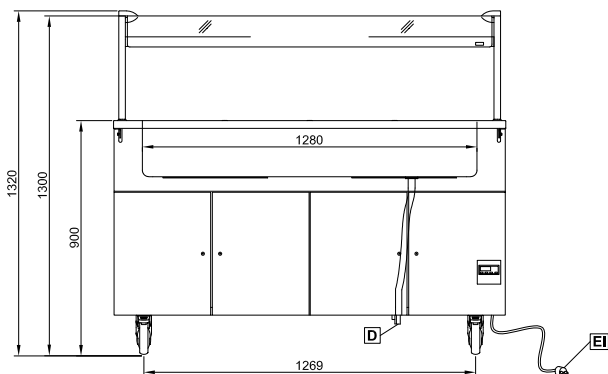
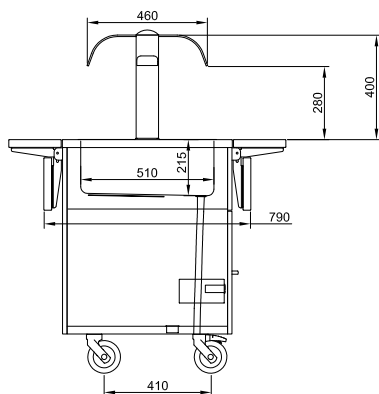
- |   |            |                          |
|---|------------|--------------------------|
| • Kit of plinth for wheels, for 4 GN container capacity units | PNC 852007 | <input type="checkbox"/> |
| • OVER STRUCTURE WITH HOT LIGHT 1500MM                        | PNC 852028 | <input type="checkbox"/> |
| • ELECTRICAL SOCKET FOR 2 PLUGS                               | PNC 852031 | <input type="checkbox"/> |
| • OVER HEAD POWER SUPPLY                                      | PNC 852032 | <input type="checkbox"/> |
| • OVER HEAD POWER SUPPLY W/ ADJ. STAND PIPE                   | PNC 852034 | <input type="checkbox"/> |
| • TRAY SLIDE GABLE 1060X200                                   | PNC 852042 | <input type="checkbox"/> |
| • WATER FILLING AND OVERFLOW                                  | PNC 852053 | <input type="checkbox"/> |
| • S/S COVER PLATE GN1/1 FOR BAINMARIE                         | PNC 852054 | <input type="checkbox"/> |
| • BREAD-BASKET OVER SHEL LED LIGHT 1500MM                     | PNC 852058 | <input type="checkbox"/> |
| • DIVIDER FRAME KIT GN1/1                                     | PNC 852061 | <input type="checkbox"/> |
| • DIVIDER BAR GN1/2   | PNC 852062 | <input type="checkbox"/> |
| • ELEVATION GRILL 300X480X120MM                               | PNC 852063 | <input type="checkbox"/> |
| • ADJUSTABLE LEG, MARINE                                      | PNC 852064 | <input type="checkbox"/> |
| • S/S TRAY SLIDER 1500MM-WIDTH 200-270MM                      | PNC 852071 | <input type="checkbox"/> |
| • S/S TRAY SLIDER 1500MM-WIDTH 280-300MM                      | PNC 852077 | <input type="checkbox"/> |

APPROVAL: \_\_\_\_\_

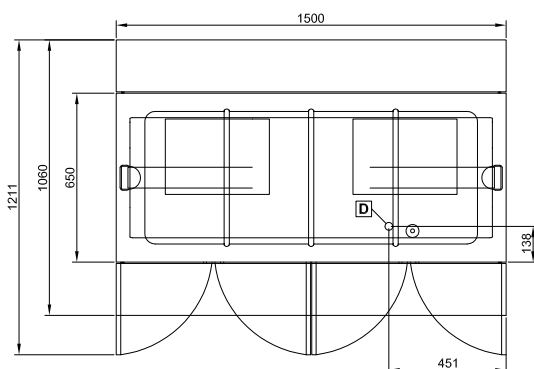
- REMOVABLE OVERSHELF S/S 1500MM PNC 852118 ☐
- OTHER LAMINATE COLOURS FOR UNITS 1500MM PNC 852136 ☐

# Flexi System

## Bain Maire Unit 1500 mm - 4 GN (beechwood finish)

**Front**

**Side**


**D** = Drain  
**EI** = Electrical inlet (power)

**Top**


### Electric

Supply voltage:

321011 (FSL15C4)

230 V/1 ph/50/60 Hz

Electrical power max.:

2 kW

### Key Information:

External dimensions, Width: 1500 mm

External dimensions, Depth: 1060 mm

External dimensions, Height: 1300 mm

Net weight: 100 kg

Well width: 1280 mm

Well depth: 510 mm

Well height: 210 mm

Well/top temperature: 60°/90° C